

Explore

Enjoy

Excel...

Be amazing!



# St. Mary's CE VA Primary School

# Welcome

Welcome to St Mary's CE VA Primary School, Yate. The school is warm and welcoming, with a strong and supportive team, working hard to enable children to enjoy learning and thrive in school.

As Ofsted (2018) noted; 'Pupils and parents say the school is a safe place where staff are skilled and caring' .

'The overwhelming majority of parents who responded to the Parent View survey believe that their children are happy and well looked after at school.'

As a Church of England Primary School, we are a school built upon Christian values and principles, believing that each child is unique and valued, with a great potential to contribute to the school community and to their world.

This prospectus gives an insight into our enriched school community, demonstrating how our vision and values are seen in the life of the school.

We would strongly encourage you to visit the school, to see for yourself a love of learning and the caring community of St Marys.



Valuing each child as a unique, talented individual, we encourage children to develop as moral, sociable, confident people, who aspire and achieve well across the curriculum. We aim to recognise ability in its broadest sense; encouraging interest, gifting and enthusiasm in sport, the arts, languages, sciences, computing and humanities, as well as in core subjects, such as Literacy and Numeracy.

The impact of this is seen in academic results consistently above the national average, at both Key Stage 1 and Key Stage 2, leading Ofsted (2018) to judge St Mary's as a good school, where,

"Pupils achieve well at this school. Children in the early years thrive. A high proportion of children achieve a good level of development by the end of the Reception Year. Pupils make good progress throughout the school...

By the end of Year 6, the proportion of pupils who attain the standard expected of them in reading, writing and mathematics is higher than seen nationally. You have high expectations of pupils and staff. You have successfully developed pupils' understanding of the school's values, and these highly positive values now shine through in the work of the school. "

Read on to find more about all our school has to offer for you and your child.



# School Vision and values

At St Mary's School, we aim for all members of the school community to: **EXPLORE - ENJOY- EXCEL:**

**EXPLORE LIFE:** gaining knowledge, understanding and skills, through exploration and enquiry, in an engaging curriculum.

**EXPLORE FAITH:** appreciating how the school's Christian values are threaded through all we do, believing every child is unique and special, with a purpose for life.

**ENJOY LEARNING:** developing a love of lifelong learning, both in and out of the classroom.

**ENJOY BELONGING:** celebrating diversity, encouraging care for ourselves and others, with a strong sense of belonging and respect.

**EXCEL DAILY:** enabling achievement across the curriculum, developing skills for life, making the most of personal gifts and talents.

As a CE VA primary school, we also value our Christian Distinctiveness.

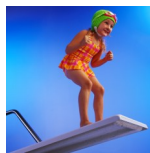
Psalm 139 sees David writing: "You are all around me—in front and in back— and have put your hand on me. Your knowledge is amazing to me; it is more than I can understand... You made my whole being; you formed me in my mother's body.

I praise you because you made me in an amazing and wonderful way. What you have done is wonderful."

This reflects the Christian belief that every child is unique and special; made in God's image, in 'an amazing and wonderful way.' It directs us to aim to provide the best of care for all children. From this we aim to develop 12 Christian Values in our pupils, shaping positive character development, to be the best we are made to be; to be amazing!



Hope



Courage



Responsibility



Respect



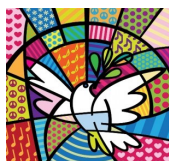
Trust



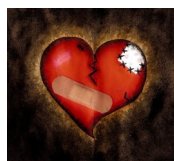
Truthfulness



Compassion



Peace



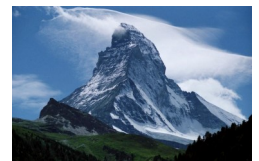
Forgiveness



Thankfulness



Friendship



Perseverance

# The School, the Church and the Community

St. Mary's is in the town of Yate, South Gloucestershire. The school lies just north of the town shopping centre, next to St. Mary's Church in a mainly residential area.

The original school opened in Victorian times, with the present buildings replacing it in 1968.

The Central Hub provides a flexible workspace and has eight classrooms clustered around it, while the remaining 4 classes are in a separate block. We have a well-stocked library, a food technology area and our own school kitchen from which we serve hot meals daily. The buildings are set in extensive and attractive grounds, including engaging play spaces, grassed-sports fields, pond and wildlife areas.



St. Mary's is a Church of England (Voluntary Aided) Primary School. This means that whilst still working within South Gloucestershire Local Education Authority, the majority of our Governors are appointed by the Diocese of Bristol and the local church, as we work to maintain the distinctive Christian foundation of St. Mary's. We have close links to St. Mary's Church, its clergy and congregation. Our most recent SIAMS inspection reported that *"Partnerships between the church and school are strong. This is evident, for instance, in the close involvement of the local ministry team in school worship and the contribution of the school choir to church services."*

We are constantly seeking to develop our engagement with the local community, especially through the sports and arts. We work closely with other schools as part of the 'Affinity' cluster, including two local secondary schools and seven primaries.



The school takes children from 4 - 11, with a maximum intake of 45 in any one year group. Each of the 12 classes is mixed ability, and taught in the main by one teacher, or a job-share, supported by additional teachers and classroom assistants.

Other support staff work in the office, kitchen, in caretaking and cleaning, and as midday supervisors.

We aim to provide a caring environment where all children are helped to learn, and to develop academically, socially and emotionally. We emphasise the positive attitudes and behaviour, which are needed in order that everyone can be safe, happy and achieve well.

“The school’s work to keep the children safe and secure is outstanding. Pupils’ welfare is given a high priority” Ofsted 2014



# Our Aims

We believe that the school should help children to grow up as responsible, thoughtful and confident adults, who are able to manage their own lives and play an active part in our complex and changing society.

Therefore we aim to:

- teach all children key skills across the curriculum, enabling them to achieve the highest possible standards.
- encourage all children to be enthusiastic, independent learners who take pride in their aptitudes, achievements and the quality of their work.
- foster in all children positive and caring attitudes towards themselves, the school and the wider community.
- encourage in all children a growing awareness of the spiritual dimension of life, and particularly how Christian values and beliefs can shape our lives today.

At St. Mary's we share the commitment of South Gloucestershire Council and the Diocese of Bristol, to ensuring that every child has equal educational opportunities - regardless of gender, age, ethnic background and culture, religion, disability or disadvantage.

We believe that all these aims will be best achieved through an active partnership of children, parents, staff and Governors., respecting diversity.



# A Healthy School

We aim to enable children at St. Mary's to be physically, mentally and emotionally healthy. Healthy lifestyles are encouraged in a number of ways, such as

- Breakfast club
- Regular PE lesson covering many different sports, supported by professional sports coaching.
- A variety of active after school clubs
- Encouraging children to drink water
- Free fruit for KS1.
- Participating in local sporting events
- Learning about changes that take place in our bodies when we exercise, and eat healthily.



# Enjoying and Achieving

At St. Mary's we want children to get the most out of life and develop the skills they will need for their secondary education and indeed for life.



Here are some ways we achieve this...

- Through excellent early years provision which promotes children's development and wellbeing, in a rich inside and outside learning environment.
- Encouraging good attendance, only authorising absence in 'exceptional circumstances.'
- Providing a good range of after school clubs
- Promoting good behaviour to enable all children to access our exciting curriculum
- Through valuing music and the arts
- Through a carefully planned creative curriculum, which allows children to become independent and lifelong learners





# Safeguarding

At St. Mary's school we care for your children and provide a safe environment for your children where they can be protected from harm. We do this by...

- Prioritising pastoral care, with a designated 'pastoral leadership team.'
- Supporting the children to feel safe
- Fenced area for the early years children
- Secure entry into the school building
- Teaching a carefully designed programme of social and emotional aspects of learning
- Providing counselling for individual children in vulnerable situations.

This led Ofsted (2018) to observe:  
"you have established a strong and open culture of safeguarding."

"The school's arrangements for keeping pupils safe are effective...

You keep detailed and accurate records of any concerns that staff have about pupils' welfare and the action that is subsequently taken. You follow up tenaciously if you are not satisfied with the response of other agencies when they are notified."

We also teach the children how to keep themselves safe and how to become responsible, thoughtful citizens. Here are just some of the ways we do this....

- Swimming lessons for all in Year 3 and non-swimmers in Y5/6.
- Providing a curriculum through which the children learn values for life
- Inviting members of the local community into school such as dentist, doctor, nurse, fire brigade
- Providing cycling proficiency and training
- Visiting the Life Skills centre
- Providing first aid training to year 6



# Making a Positive Contribution

At St. Mary's we want children to be fully involved in not only the school community but also the local community and society as a whole. We want them to be responsible global citizens.

To achieve this...

- The active School Council enables children to make decisions to improve the school.
- Older children act as play leaders to their younger peers
- Circle time in the classroom allows children the opportunity to speak and be listened to.
- The school participates in a programme called SEAL 'Social and Emotional Aspects of Learning'
- Christian Values are central to everyday school life, with values celebrated in Friday assemblies.
- Children are actively involved in supporting charities.



# Partnership with St Helen's

In May 2019, St Mary's formed a partnership with St Helen's Primary School in Alveston.

**Our Mission:** *Growing together, pursuing life in all its fullness*

The communities of St Mary's and St Helen's Primary Schools are passionate about our two schools. We want to see them grow and develop to deliver the best possible opportunities and experiences for our pupils. We believe that a partnership between the two schools is a fantastic way for us to do that.

It is our aim that the two communities grow together, sharing with and learning from each other, respecting and retaining the individuality that we love so much. Rooted firmly in our shared Christian values and distinctive Christian ethos, we believe that partnership will enable us to achieve more. Growing together, we will enhance opportunities for **excellence, enjoyment and exploration** within the schools with the aim of improving pupils' **achievement** and enriching their experiences, preparing them for the next phase of their learning and life.

*'To dare more boldly.*

*To venture on wider seas where storms will show God's mastery;*

*Where losing sight of land, we shall find the stars.'*

Prayer of Sir Francis Drake, explorer, 1540-1596.

## Partnership Principles:

Our principles are set to enable us to achieve the aims in our school's individual vision statements, where we found real commonality:

**St Helen's: Excellence, Enjoyment and Achievement together**

**St Mary's: Enjoy, Explore, Excel: Be amazing**

|                              |  |
|------------------------------|--|
| Partnership for Excellence   | Collaborating at all levels, building capacity for leadership and striving together for excellence.<br><br><i>Creating communities for learning where we empower new and innovative development opportunities. Sharing excellent practice and growing leaders of learning across the partnership.</i>  |
| Partnership for Enjoyment    | Enriching our learning and experiences, fostering enjoyment.<br><br><i>Sharing skills and expertise to enrich and develop a creative and immersive curriculum. Sharing our experiences, creating new and exciting opportunities to have fun and learn together.</i>  |
| Partnership for Exploration  | Continuously improving, innovating and exploring.<br><br><i>To stretch and challenge each other at all levels to deepen our learning and encourage exploration. To spread the impact of this learning across the partnership and beyond, into the communities.</i>   |
| Partnership for Achievement: | Working together to raise outcomes, keeping children's achievement at the very centre of everything we do.<br><br><i>Driving improvements in children's achievement by learning from each other and re-aligning roles so that they can be more sharply focussed on developing the quality of teaching, behaviour, learning and outcomes.</i> |

St Helen's and St Mary's Primary School Partnership  
**Growing together, pursuing life in all its fullness**

**Partnership for Excellence**

Collaborating at all levels, building capacity for leadership and striving for excellence.

**Partnership for Enjoyment**

Enriching our learning and experiences, fostering enjoyment.

**Partnership for Exploration**

Continuously improving, innovating and exploring.

**Partnership for Achievement**

Working together to raise outcomes, keeping children's achievement at the very centre.



# Admissions Policy

## ST.MARY'S CE VA PRIMARY SCHOOL, YATE ADMISSIONS POLICY 2022-23

**Should the number of applications for reception places exceed 45; the places will be allocated using the following criteria:**

Children with an EHCP will be admitted, where the school is named within their EHCP. This is not a part of the oversubscription criteria.

**Firstly** – children in public care (as defined by section 22 of the 1989 children Act), including **those who have ever been previously “looked after” children.**

**Secondly** - to children who already have a sibling on roll in the school at the time when the child is admitted.

- Children are siblings if they are half or full brother/sister, or they are adoptive brother/sister
- They are children of the same household.

In the event of a tie break places will be allocated as outlined in criteria four.

**Thirdly** - to children whose ‘parent/carer and/or the child’ **regularly** worship as part of a Christian church. Applications must be supported by a Minister confirming attendance over the last two years, using the supplementary form attached to this policy. This is to be sent directly to the school.

Christian church means:

- The Church of England or other Anglican Church, or
- A Christian church which is in membership of Churches Together in England (or its partner bodies in Scotland, Wales & Ireland), or
- Church or a congregation, which can provide evidence of affiliation to the Evangelical Alliance.
- In the event of a tie break priority will be given to criteria four as described below; distance from school.

**Church Applicants** will be considered by the Governors on the basis of information provided on the **Supplementary Form** as confirmed by **Church/Place of Worship** representatives, if the **Parent/Carer** and/or the child are regular worshippers. This means attending **Church/Place of Worship in an act of worship** two or more times a month for a minimum of the last two years.

‘Worship’ in the above includes not only Sunday services, but also weekday ones and it includes Sunday School or equivalent on a Sunday or on another day, so long as the group is primarily about worship.

‘Minimum of years’: **Parents/Carers** should calculate the minimum number of years’ attendance as including the period up to the date of application closure.

**Fourthly** - all other children, beginning with those who live closest to the school. Distances from home to the centre of the school are measured using the latest South Gloucestershire Council Routes to school Gazetteer.

The closing date for on time applications for places in Reception is published by the local authority. Applications for Reception received after the closing date are **‘late applications’** and will not normally be considered for the initial allocation of places.

If places become available following the initial allocation of places for the reception year, the same criteria will be applied to late applications, or applications for children whose parents have indicated in writing that they still wish to be considered for a place.

**Deferred Admissions will be in line with South Gloucestershire LA arrangements, as set out in its Admission to Primary Schools booklet and the Admissions Code:**

*Where a child is offered a place at a school: a) that child is entitled to a full-time place in the September following their fourth birthday; b) the child's parents can defer the date their child is admitted to the school until later in the school year, but not beyond the point at which they reach compulsory school age and not beyond the beginning of the final term of the school year for which it was made; c) where the parents wish, children may attend part-time until later in the school year but not beyond the point at which they reach compulsory school age. (Admissions Code 2:16)*

Parents may request that a child is admitted out of their age group – for example, a place to be deferred for a year and a child admitted into reception rather than year 1.

For requesting admission out of the normal age group, such a request must be sent to the governing body, at the time of submitting their request for a place at St Mary's.

The full governing body will make decision on the basis of the circumstances of each case and in the best interest of the child concerned. This will include taking account of the parent's views; information about the child's academic, social and emotional development; where relevant, their medical history and the views of a medical professional; whether they have previously been educated out of their normal age group; and whether they may naturally have fallen into a lower age group if it were not for being born prematurely.

Parents will be notified of the governing body's decision within 1 school term.

For admission during the school year, the number of children in any single Year Group will not exceed 45. If places become available in any particular Year Group during the year they will be allocated to new children of the appropriate age, following the over-subscription criteria above.

All applicants will be admitted if the school is not oversubscribed.

**RIGHT TO APPEAL**

If the school is full in the relevant year group and a place is not offered there is a right of appeal against this decision to an Independent Appeal Panel. Where the child has an EHCP, the appeal is to the Special Educational Needs and Disability Tribunal.

**WAITING LIST**

In the event of oversubscription and refusal of applications for places, a waiting list will be maintained for any vacancies which occur. Once the initial waiting list has been established for places in reception, ranked by the criteria above, any additional applications will be added to the list, using the same oversubscription criteria. Any in-year application will be ranked according to our oversubscription criteria and placed on the waiting list on this basis, not on the basis of date of application.

**TIE BREAKER**

Where the school is oversubscribed and it does not prove possible to resolve allocation of places by the application of the oversubscription criteria set out above, any remaining places will be allocated by drawing lots. Lots will be drawn by an appropriate person, independent of the admissions process at the school.

**CHILDREN WITH AN EDUCATION HEALTH CARE PLAN**

There is a different procedure for the admissions to school for children with an EHCP: it is administered by the Local Authority (LA) in whose area the family lives. The LA is responsible for issuing the EHCP and consulting parents and the Governing Body of St. Mary's, if a preference has been made for the school, before the school is named in the EHCP.

## **ADMISSION APPLICATION FORMS**

**Admission application forms should be returned to your Local Authority.** For South Gloucestershire residents this is:

Student Access and Support Team,  
South Gloucestershire Council  
Badminton Road  
Yate  
South Glos  
BS37 5AF

Applications can also be submitted on line [www.southglos.gov.uk/admissions](http://www.southglos.gov.uk/admissions)

# **Supplementary Form for Admission to Year Reception in Sept 2022**

## **Section A**

All 3 pages of this form must be sent **directly to the School, if applying under Criteria 3**. Governors need this information to enable them to apply the oversubscription criteria to your application. Your application cannot be considered if you have not also submitted the Common Application Form to your Local Authority.

**The form only needs to be filled in if you are applying under the oversubscription faith criteria ('third' criteria as shown on page 1 of the Admissions Policy).**

Please ensure that you read the Admissions Policy and the Guidance Notes, which will help you to complete this form.

### **Guidance Notes for Parents/Carers**

**Please read very carefully, the Admissions Policy that accompanies this form, before filling in any part of the form.**

1. The home address must be the child's main place of residence at the closing date for applications. Where parents/carers have shared responsibility for a child and the child lives for part of the week with each Parent/Carer, the nearer address will be considered as the home address.
2. To help you decide into which group you and/or your child fits, descriptions of the groups have been printed in full, in the Admissions Policy. Please read these descriptions very carefully, as your authorised representative will have to confirm the group into which you fit.
3. Now take all pages of this Supplementary Form and the Admissions Policy to the authorised representative of your place of worship. You may need to make an appointment with them first. Please ensure that they read the guidance notes before signing your form.
4. All pages of the supplementary form must reach St Mary's CE VA Primary School by the admissions closing date, as set by the Local Authority. Failure to do so will mean that your application cannot be considered under oversubscription criterion 3.
5. You must also complete the Local Authority's Common Application Form and it must reach your Local Authority on or before this same date, 15 January 2022, for admission to Reception for September 2022 only.

**Please enclose a stamped postcard / self addressed envelope if you require confirmation of receipt of this Supplementary Form**



## Supplementary Form for Admission to Year Reception in Sept 2022

### Section A

**To be completed by Parents / Carers:**

#### **1. General Information**

|                 |  |
|-----------------|--|
| Child's Surname |  |
| Forenames       |  |
| Date of Birth   |  |
| Home Address    |  |
| Postcode        |  |

**2: Regular church attendance:** This means attending **Church/Place of Worship** two or more times a month for a minimum of the last two years.

|  |                      |        |
|--|----------------------|--------|
| 2: Parent / Carer  |                      |        |
| Does a Parent / Carer regularly attend a place of worship?   |                      |        |
| If Yes, which place of worship?  |                      |        |
| How long have they attended this place of worship?   | Years                | Months |
| Does your child regularly attend a place of worship?   | Please circle YES NO |        |
| If Yes, which place of worship?  |                      |        |
| How long has he/she attended this place of worship?  | Years                | Months |
| <b>3: If, in the last two years, you and/or your child have regularly attended a place of worship different from the one(s) stated above, please give details below.</b> |                      |        |
| Place of worship   |                      |        |
| Exact Dates of Attendance  | From:                | To:    |
| Name of Minister(s):   |                      |        |
| Contact Address(es):   |                      |        |
| Telephone Number(s):   |                      |        |
| E-Mail Address(es)   |                      |        |

#### **4: Declarations**

|   |       |
|---|-------|
| <b>One Parent / Carer must sign</b> the following statement:<br>I verify that the information given above is true and accurate. |       |
| Signed:   | Date: |

**Now take the complete 'Supplementary Form' to the minister, leader or authorised representative of your place of worship.**

Please note that the form must be signed by one person who holds a position of responsibility in the church or place of worship; this will, for example, include the priest, minister or pastor, churchwarden, steward, elder or deacon, Sunday school or youth leader but must not include anyone related in any way to the applicant.

**Should the Governors find any discrepancy in the information given before the term of entry, they reserve the right to re-consider any place offered.**

## **Supplementary Form for Admission to Year Reception in Sept 2022**

### **Section B**

**This part of the form is to be completed by the church representative only.**

#### **Guidance notes for Church Representatives**

Please read these guidance notes very carefully before agreeing with the level of involvement of the Parent/Carer and/or child in your church or place of worship:

1. We require the signatures of one person who holds a position of responsibility in the place of worship but who must not be related in any way to the applicant.
2. It is hoped that the Parent/Carer has made an appointment with the person of responsibility in the place of worship, to discuss this application. If you disagree with the Parent/Carer's description of their involvement, please indicate this, together with an explanation.
3. To help you decide into which group the applicant fits, descriptions of the groups are printed below. Please note where a Parent/Carer has indicated a second Church in Box 3 of the Supplementary Form, please allocate to a group based solely on frequency of attendance at your church.

Regular attendance means attending **Church/Place of Worship** two or more times a month for a minimum of the last two years.

**Any less frequent attendance would NOT qualify as 'regular church attendance.'**

'Worship' in the above includes not only Sunday services, but also weekday ones and it includes Sunday School or equivalent on a Sunday or on another day so long as the group is primarily about worship. 'Minimum of years.' Parents/Carers should calculate the minimum number of year's attendance as including the period up to the day before the specified closing date for submission of the Supplementary Form. If there was regular attendance before the COVID pandemic you can assume such attendance would have continued were it not for the lockdown. This must be confirmed by the church representative. Please reiterate to the Parent/Carer that the **Local Authority's Common Application form must also be filled in and returned to the Local Authority**, whereas this **supplementary form must be returned direct to St Mary's CE VA Primary School**. Both forms must arrive at their respective destinations by the admissions closing date, as set by the Local Authority

**Thank you very much for your help and time in this process.**

# Supplementary Form for Admission to Year Reception in Sept 2022

## Section B

We, being the authorised representatives of ....., (Place of Worship) have read the guidance notes of this form and believe that the application falls within the category below:

Decide which description comes closest to describing the parent/carer, or their child's involvement in the place or worship.

Place a tick against ONE of the groups below:

|                               |  |
|-------------------------------|--|
| <b>Regular attendance</b>     |  |
| <b>Not regular attendance</b> |  |

This section should not be signed by any relative of the applicant Please ensure that you have ticked one of the above boxes before signing below. If your decision on the regularity of attendance differs from that of the parent, please indicate briefly why, including any extenuating circumstances:

Signature:

Please complete the following in **BLOCK CAPITALS**

Form please enclose a stamped addressed postcard.

Name:

Position of responsibility:

Contact Address:

Telephone Number:

E-Mail Address:

If you would like to find out more  
about our school please have a look  
on our website or contact the school

office email:

[office@stmarysyate.org.uk](mailto:office@stmarysyate.org.uk)

St. Mary's CE Primary School  
Church Road

Yate

BS37 5BG

Tel. 01454 867 155

[www.stmarysyate.org.uk](http://www.stmarysyate.org.uk)

