

Introduction to South Glos Parent carers



Our Team Today



- **Caz LeRoy**
Peer Supporter Lead
- **Joey Savory**
Peer Support co-ordinator
- **Helen Luff**
Peer Supporter



SGPC



SGPC is the independent local Parent Carer Forum recognised by the Department for Education (DfE)

We are 1 of 151 forums across England



Is a diagnosis needed to be part of our group?



We support families at all stages of their SEND journey.

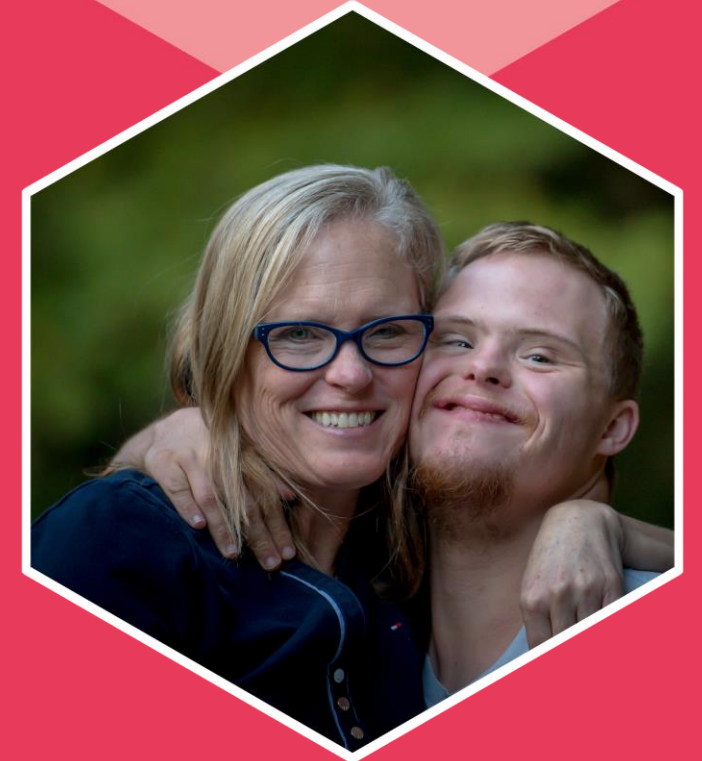
No diagnosis is needed to be part of our group.



Our employees and volunteers



All our employees and volunteers
are parent carers for whom the
SEND journey is their real lived
experience



About SGPC



We support and empower parent carers who are on the SEND parenting journey.



About SGPC



We anonymously gather views of our community and your lived experiences via parent carer support and engagement activities.



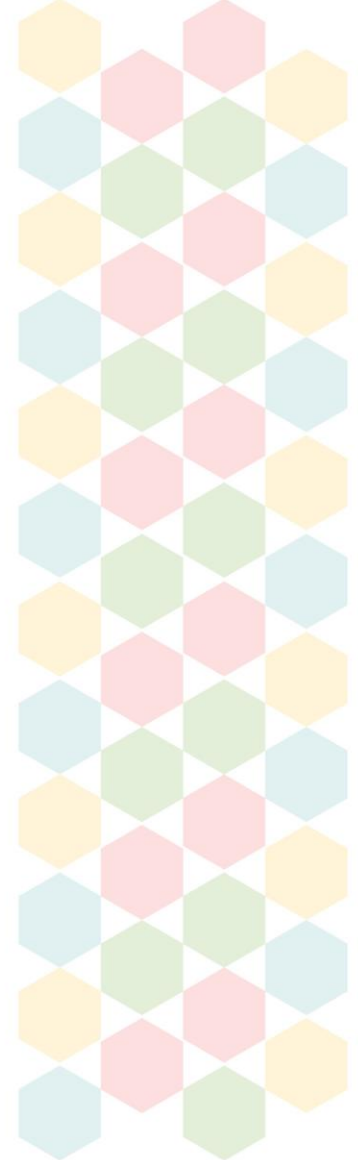
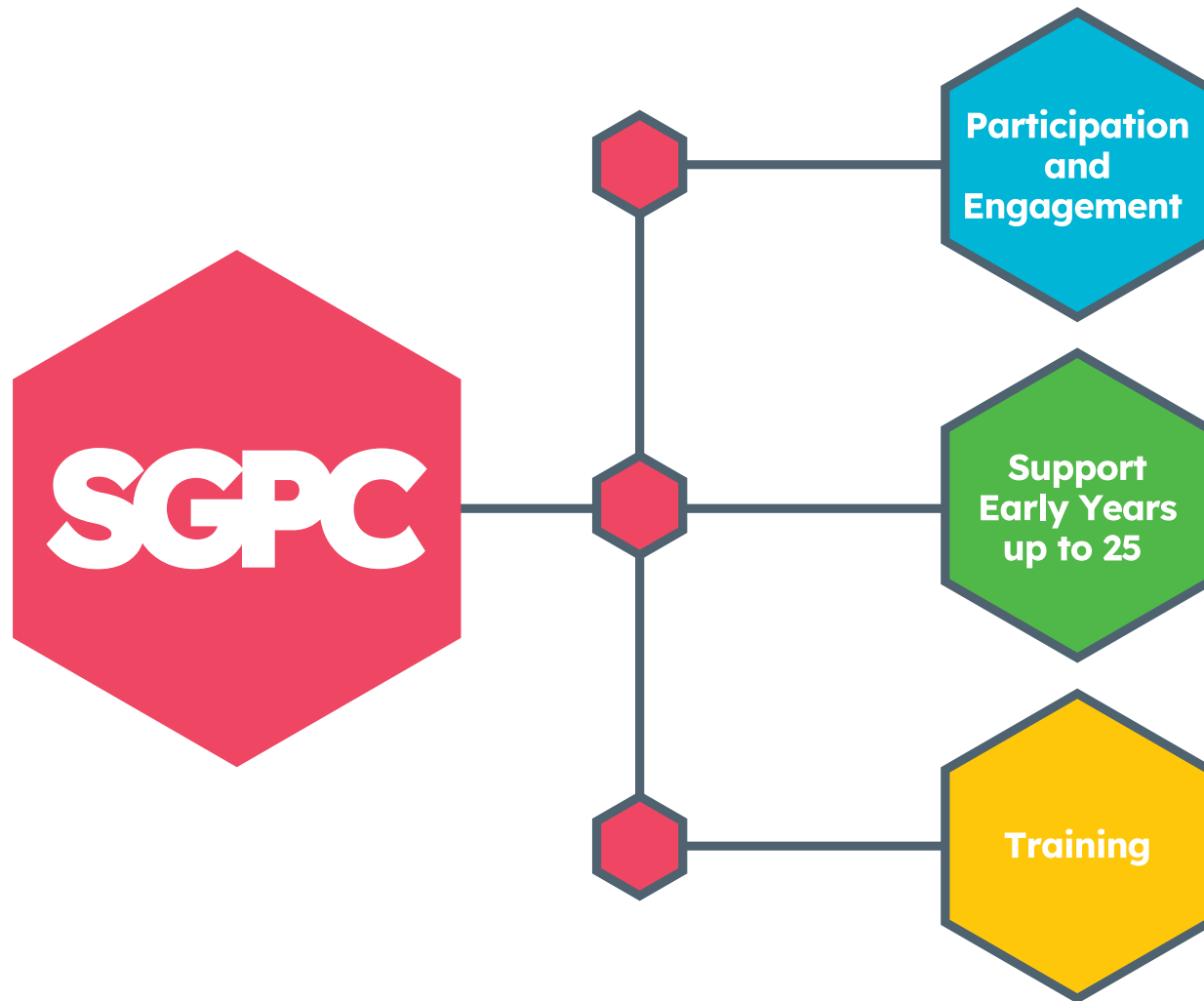
About SGPC



We work together with service providers to connect the voice of parent carers with decision makers to help to shape great services.



About SGPC

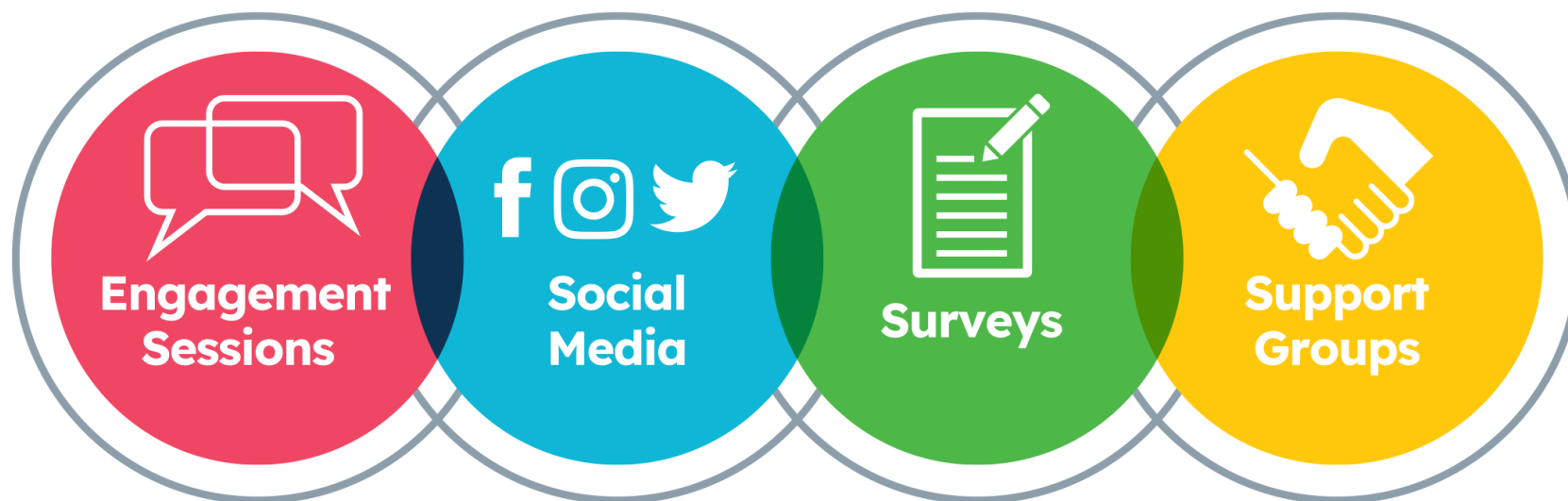


Participation & Engagement



We have many years' experience of engaging with families who have children 0-25 with special educational needs and disabilities (SEND) and representing their voices to the local commissioners and service providers.

We work with those providers to help ensure that their services meet the needs of its community of SEND families.



Participation & Engagement

Some of the meetings we attend to represent family views to influence and shape services.

Multiagency Quality Assurance (EHCP)

CCG Health meetings across Bristol,

North Somerset and South Gloucestershire

ISEND Communications Working Group

Social Care

Preparing for Adulthood (PFA)

SEND Cluster Board

Emotionally Based School Avoidance (EBSA)

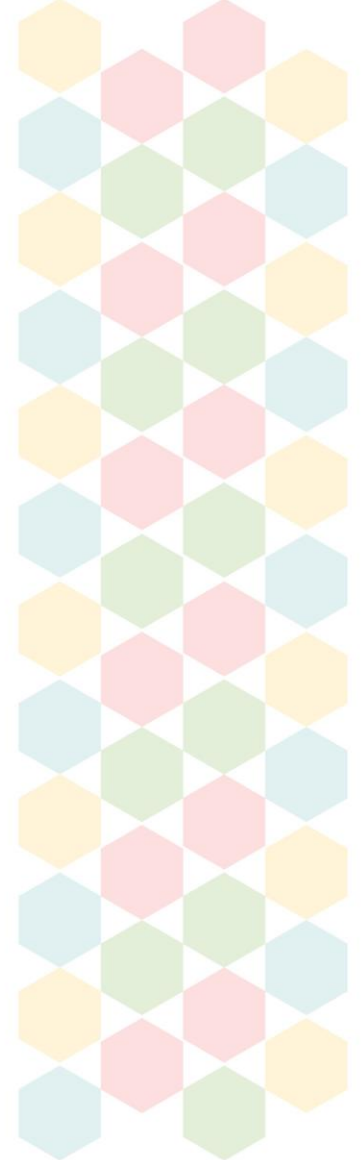
Mental Health Strategy

Learning Disability Project Board

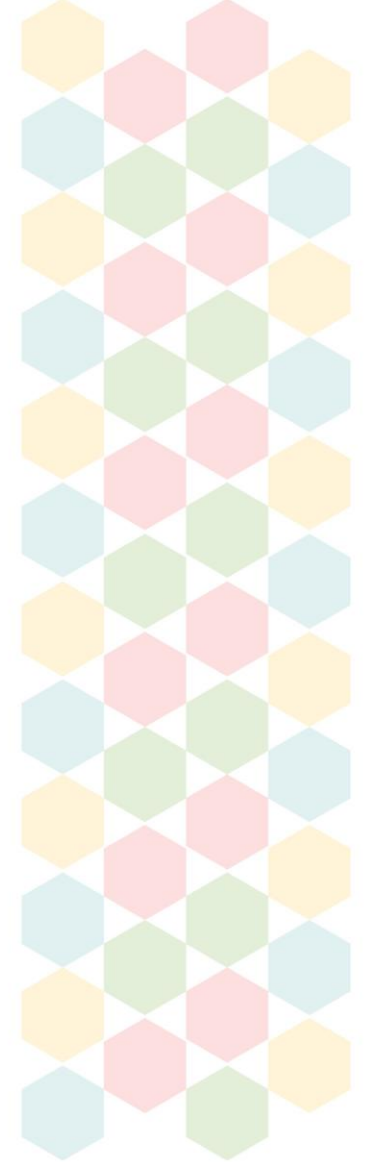
Local Autism Group

Annual Reviews Working Group

SENCO Briefings



Parent Reps



Our Parent Reps are key to what we do at South Glos Parent Carers. Without them, we couldn't do all the things we do. Parent Reps give power to our family's voices, to help improve services and access to them, going forward.

Being part of our team can be very rewarding!

Giving back can have a positive impact on our emotional wellbeing and sometimes the small act of feeling heard makes a big difference. Being a Parent Representative, you are supported throughout, whilst developing new skills, knowledge, and experiences. By enhancing your skills and learning new ones, you will grow in confidence, to help support families with SEND.

Without our wonderful Parent Representatives, we couldn't be the voice of our community.

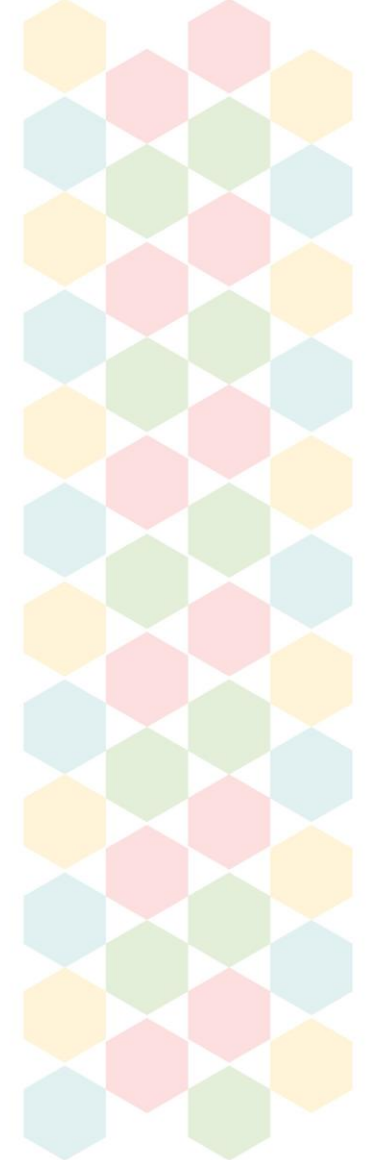
Come and join us.

If you are interested in finding out more, please email Robbie.holland@sglospc.org.uk or Julie.bye@sglospc.org.uk

Support Early Years Up to 25



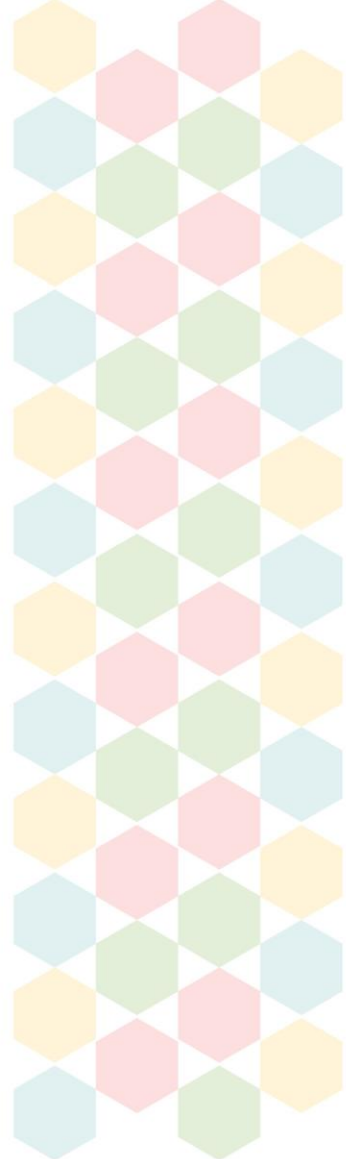
South Glos Parent Carers (SGPC) offer families consistent support and provide that support at the earliest possible point in the family's journey.



SGPC
South Glos Parent Carers

360 Outreach Project – Cluster 2, 3 & 4.5

Outreach programme for Primary & Secondary schools offering peer to peer support for families at the earliest possible point in the family’s journey.



Our Community Support



Support – Webinars, Workshops & Speakers



Booked via South Glos Parent Carers' Events www.eventbrite.co.uk

Makaton
ADHD
Autism for Girls
Neurodiversity
and Eating

Demand
Avoidance
Self Harm
Emotionally
Based School
Avoidance

Post 16+
Organisations
Trauma
Puberty

Dean Beadle:
Social & Emotional Needs
Anxiety & Autistic Joy
Executive Functioning
Neurodivergent
identity & wellbeing



Bristol, North Somerset & South Glos Parent Carer Forums



We deliver our workshops across Bristol, North Somerset and South Gloucestershire (BNSSG) with our colleagues from the North Somerset and Bristol forums to provide information, support and practical guidance for families on the Autism waiting list.

We will be running both on-line and in person workshops on a variety of topics relating to Autism.

You can book via www.eventbrite.co.uk/o/bristol-n-somerset-and-s-glos-parent-carer-forums-41027867683



**Working together
for SEND families**



Further information & contact details



Website: <https://www.sglospc.org.uk/> to join our mailing list for information about upcoming support and information events.

Families can contact Support at: Support@sglospc.org.uk

For under 5's Little.treasures@sglospc.org.uk

Eventbrite <https://www.eventbrite.co.uk/o/south-glos-parent-carers-33451038563>

If you are on the **Autism waiting list** you can find the three forums training information at <https://www.eventbrite.co.uk/o/bristol-n-somerset-and-s-glos-parent-carer-forums-41027867683>

Main Facebook Page <https://www.facebook.com/sgpc.community>

You can also request to join our closed parent groups 'SGPC - Our Community' and 'SGPC - Supporting your child into Adulthood'

Current Survey:

Banding feedback: https://www.surveymonkey.co.uk/r/SGPC_InclEd





SGPC

South Glos Parent Carers

South Glos Parent Carers, Poole Court Drive,
Yate, Bristol, England, BS37 5PT, UK

Tel: 01454 501 009 Email: team@sglospc.org.uk

Web: www.sglospc.org.uk

Community Interest Company (not for profit) 8364673